

FOUNDATION RECOGNITION

The Rotary Foundation offers numerous opportunities for individuals who support our grants and programs to receive recognition and appreciation.

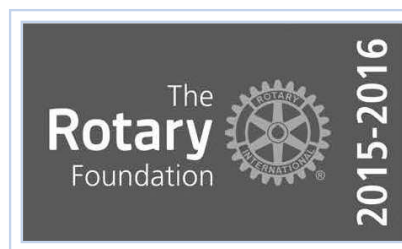
On [My Rotary](#), you can view your Donor History Report, which includes your personal contribution history and recognition summary. You can also request this report by emailing rotarysupportcenter@rotary.org.

INDIVIDUAL RECOGNITION

Rotary leaders can use My Rotary or Rotary Club Central to view individual and club-level giving to identify recognition progress.

Rotary Foundation Sustaining Member

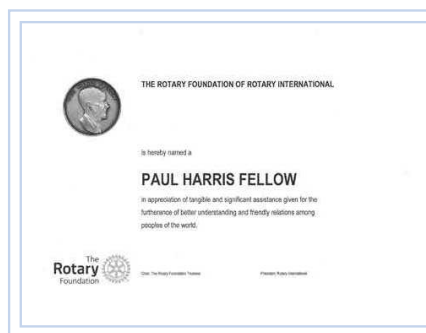
A Rotary Foundation Sustaining Member personally contributes \$100 or more each Rotary year to the Annual Fund. These contributions count toward Paul Harris Fellow, Multiple Paul Harris Fellow, Paul Harris Society, Major Donor, and club recognition banners. Use the [Sustaining Member badge stickers](#) to recognize these donors in your club.



Use the Club Foundation Banner Report to see your club's Rotary Foundation Sustaining Members.

Paul Harris Fellow

Paul Harris Fellow recognition is given to anyone who contributes (or in whose name is contributed, using Foundation recognition points) a gift of \$1,000 or more cumulatively to the Annual Fund, PolioPlus Fund, or an approved global grant. Recognition consists of a certificate and pin. Order optional recognition items, including the [Paul Harris Fellow medallion](#) for \$15 and a complimentary certificate cover, at shop.rotary.org. Use the Club Recognition Summary to see your club's Paul Harris Fellows.



Certificate of Appreciation

Certificate of Appreciation recognition is given to honor a business or organization. Since Paul Harris Fellows are only for individuals, a donor may use their Foundation recognition points to award a business or organization a certificate of appreciation.



Multiple Paul Harris Fellow

Multiple Paul Harris Fellow recognition is given at subsequent \$1,000 levels. Recognition consists of a pin set with additional stones corresponding to the recipient's recognition amount.



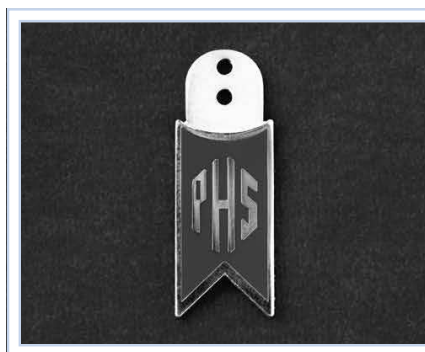
PHF

Level	Range*	Pin
+1	\$2,000 to \$2,999	one sapphire
+2	\$3,000 to \$3,999	two sapphires
+3	\$4,000 to \$4,999	three sapphires
+4	\$5,000 to \$5,999	four sapphires
+5	\$6,000 to \$6,999	five sapphires
+6	\$7,000 to \$7,999	one ruby
+7	\$8,000 to \$8,999	two rubies
+8	\$9,000 to \$9,999	three rubies

*Range can consist of a combination of cash contributions and Foundation recognition points received.

Paul Harris Society

The Paul Harris Society recognizes individuals who choose to contribute \$1,000 or more each Rotary year to the Annual Fund, PolioPlus Fund, or an approved global grant. Paul Harris Society contributions count toward these recognition categories: Rotary Foundation Sustaining Member and Every Rotarian, Every Year (Annual Fund contributions only); Paul Harris Fellow; Multiple Paul Harris Fellow; Major Donor; and club recognition banners. Recognition consists of a chevron-style pin provided by your district Paul Harris Society coordinator.



Paul Harris Society members are listed in the Paul Harris Society Report.

Major Donor

The Rotary Foundation recognizes individuals or couples whose combined giving has reached \$10,000, regardless of the gift designation. This recognition level can be achieved only through personal contributions and not through recognition points. Major Donors may elect to receive a crystal recognition piece and pin(s) commemorating the gift at each new recognition level. Major Donors are listed in the Major Donor, Arch Klumph Society, and Bequest Society Report.



Level	Range
1	\$10,000 to \$24,999
2	\$25,000 to \$49,999
3	\$50,000 to \$99,999
4	\$100,000 to \$249,999

Arch Klumph Society

Donors who contribute \$250,000 or more become members of the Arch Klumph Society. Portraits, biographies, and, in some cases, video clips are housed in the digital Arch Klumph Gallery on the 17th floor of Rotary International World Headquarters; another digital gallery travels to Rotary events around the world. Members also receive lapel pins and pendants, signed certificates, and invitations to the society's exclusive events, held worldwide. New members are invited to a special induction ceremony. Arch Klumph Society members are listed in the Major Donor, Arch Klumph Society, and Bequest Society Report.



- Trustees Circle — \$250,000 to \$499,999
- Chair's Circle — \$500,000 to \$999,999
- Foundation Circle — \$1 million to \$2,499,999
- Platinum Trustees Circle — \$2.5 million to \$4,999,999
- Platinum Chair's Circle — \$5 million to \$9,999,999
- Platinum Foundation Circle — \$10 million and above

Benefactor

A Benefactor is someone who informs The Rotary Foundation in writing that they have made a provision in their estate plan for the Foundation, or who makes an outright gift of \$1,000 or more to the Endowment Fund. Benefactors receive a certificate and insignia to be worn with a Rotary or Paul Harris Fellow pin. They are listed in the Benefactor Report and identified in the Club Recognition Summary.

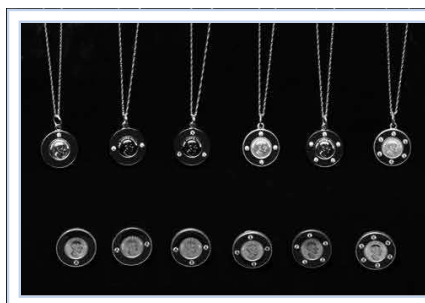


Bequest Society

The Rotary Foundation recognizes couples or individuals who have made commitments in their estate plans totaling \$10,000 or more. Donors may elect to receive an engraved crystal recognition piece and a pin commemorating the commitment at each new recognition level. Bequest Society members are listed on the Major Donor, Arch Klumph Society, and Bequest Society Report.



Level	Range
1	\$10,000 to \$24,999
2	\$25,000 to \$49,999
3	\$50,000 to \$99,999
4	\$100,000 to \$249,999
5	\$250,000 to \$499,999
6	\$500,000 to \$999,999
7	\$1 million to \$2,499,999
8	\$2.5 million to \$4,999,999
9	\$5 million to \$9,999,999
10	\$10 million and above



CLUB RECOGNITION

The Rotary Foundation offers clubs several opportunities to earn recognition for their support of its grants and programs.

The Club Foundation Banner Report displays a club's progress in the current Rotary year toward becoming a 100% Foundation Giving Club and a 100% Every Rotarian, Every Year Club, and toward qualifying for Top Three Per Capita in Annual Fund Giving banner recognition.

As of 2015-16, new club members (those who joined or transferred from another club during the current Rotary year) are not included in participation requirements for club banners (except for the 100% Paul Harris Fellow Banner). However, new members' contributions will be used for per capita calculations.

Banner recipients listed in the [Club Foundation Banner Report](#) may fluctuate throughout the Rotary year due to changes in membership and additional or redistributed contributions. Leaders can use the report to determine whether your club will qualify for the annual recognition banners listed below. Final banner certification is processed by The Rotary Foundation following the close of the Rotary year on 30 June. Club banners earned for the previous year are shipped to the district governor in October or November. Request the District Foundation Banner Report at rotarysupportcenter@rotary.org.

100% Foundation Giving

This banner is awarded to clubs that achieve an average of \$100 in per capita giving and 100 percent participation, with every dues-paying member contributing at least \$25 to any or all of the following during the Rotary year: Annual Fund, PolioPlus Fund, approved global grants, or Endowment Fund.

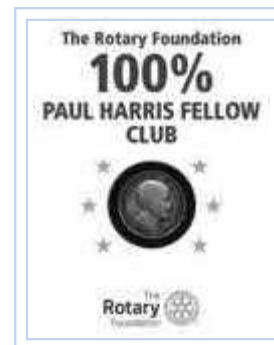


100% Paul Harris Fellow Club

For a club to be eligible, every dues-paying member must be a Paul Harris Fellow at the time the district governor requests banner recognition. This recognition is a one-time-only award, but the intent is that the club will maintain its membership at the 100% Paul Harris Fellow level.

To obtain this recognition:

1. A club representative contacts the district governor after determining that all current dues-paying club members are Paul Harris Fellows.
2. The district governor confirms that all members are Paul Harris Fellows by using the Club Recognition Summary, and then notifies The Rotary Foundation by email at rotarysupportcenter@rotary.org.



The top of the Club Recognition Summary indicates whether the club received the 100% Paul Harris Fellow Club banner, along with the date this was achieved.

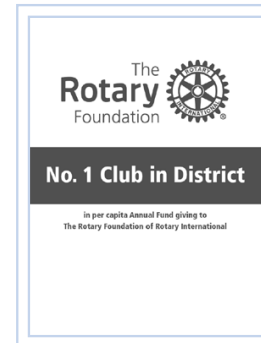
100% Every Rotarian, Every Year Club

Rotary clubs must achieve a minimum Annual Fund contribution of \$100 per capita during the Rotary year, and every dues-paying member must personally contribute at least \$25 to the Annual Fund during the year.



Top Three Per Capita in Annual Fund Giving

Banners are given to the three clubs in each district that give the most per capita to the Annual Fund. To be eligible, clubs must achieve a minimum of \$50 in per capita annual giving.



100% Paul Harris Society Club

This recognition is awarded to clubs in which every dues-paying member has contributed a minimum of \$1,000 to the Annual Fund, PolioPlus Fund, or an approved global grant during the Rotary year.



End Polio Now: Make History Today Campaign Certificate of Appreciation

Awarded to clubs that annually contribute \$1,500 or more to Rotary's PolioPlus Fund beginning 1 July 2013 through 30 June 2018.

FOUNDATION RECOGNITION POINTS

Foundation recognition points are awarded to donors who contribute to The Rotary Foundation through the Annual Fund, PolioPlus Fund, or an approved global grant. Donors receive one Foundation recognition point for every U.S. dollar contributed to these funds. Contributions to the Endowment Fund are not eligible.

Donors can extend Foundation recognition points to others to help them become, or to name them as, a Paul Harris Fellow or Multiple Paul Harris Fellow. Foundation recognition points belong to the original donor until the donor uses the points or until the donor's death, at which time they expire (unless the donor is a Major Donor, in which case their points may be used by their surviving spouse).

Note: Foundation recognition points do not count toward Paul Harris Society and Major Donor recognition.

Transfer rules

A minimum of 100 Foundation recognition points must be transferred at a time, and an authorizing signature is required when you complete the [Paul Harris Fellow Recognition Transfer Request Form](#).

Note: Foundation recognition points may not be transferred from individuals to a club or district. Donors no longer need to be a Paul Harris Fellow to receive recognition points.

RECOGNITION RESOURCES

- [Every Rotarian, Every Year Rotary Foundation Sustaining Member badge stickers \(956-EN\)](#)
- [Every Rotarian, Every Year brochure \(957-EN\)](#): Information about the Annual Fund and SHARE
- [Paul Harris Society brochure \(099-EN\)](#): Promotes the Paul Harris Society program
- [Major Gifts, Major Impact brochure \(166-EN\)](#): Information about major gifts
- [Your Rotary Legacy brochure \(330-EN\)](#): Information about giving to the Endowment Fund
- [Arch Klumph Society brochure \(308-EN\)](#): Information about the Arch Klumph Society